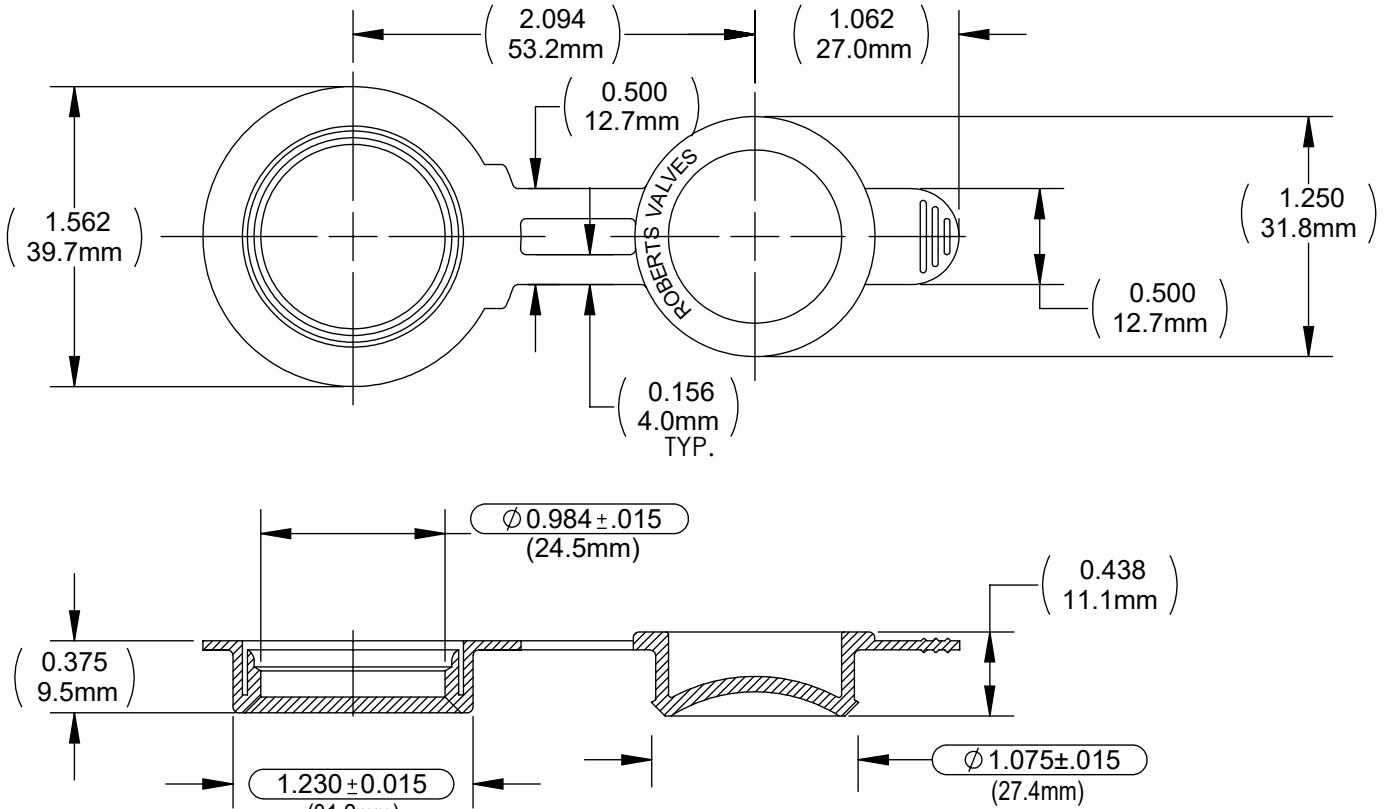


DRAWING NO. <b>C650ADMX</b>	REV <b>M</b>	<b>Customer Drawing</b>	REVISION HISTORY			
			REV	DESCRIPTION (ECO)	DATE	APPROVED
			L	ADD SUFFIX PFC CLEAR DEHP FREE MAT. ECO 10372	03/02/20	AK
			M	UPDATE MAT. DESCRIPTION ON SHEET 2. eco 10448	4/13/20	AK



NOTES:

- SUFFIX INDICATES COLOR & MATERIAL:  
 NO SUFFIX - RED, PVC  
 DB - ROYAL BLUE, PVC  
 PF - DEHP FREE RED, PVC  
 PFC - DEHP FREE CLEAR, PVC
- THIS DIA. MUST BE CHECKED WITH RING GAUGE 1.230 ± 0.0005  
 THE GAUGE SHALL BE APPLIED WITH AXIAL FORCE MIN. 1 (Lbf)
- CRITICAL DIMENSIONS ARE CIRCLED, AND SUBJECT TO INSPECTION.
- DIMENSIONS IN PARENTHESES ARE FOR REFERENCE ONLY.
- ALL DIMENSIONS ARE IN INCHES WITH NOMINAL,  
 DIMENSIONS IN MILLIMETERS BELOW.

QUALITY CRITERIA:

O.D. FLASH: 0.030 MAX. (0.76MM)
GATE VESTIGE: 0.020 MAX. (0.5MM)
EMBEDDED PARTICLES, BUBBLES, SPOTS, STAINS: 0.3mm <sup>2</sup> MAX. NO MORE THAN 5 PER PART.

**MOLDED PARTS:**  
 GATES, PARTING LINES, AND FLASH PER QUALITY CRITERIA

**PROPRIETARY AND CONFIDENTIAL**  
 THE INFORMATION CONTAINED IN THIS DRAWING IS SOLE PROPERTY  
 OF HALKEY-ROBERTS CORPORATION ST. PETERSBURG, FL. ANY  
 REPRODUCTION IN PART OR AS A WHOLE WITHOUT THE WRITTEN  
 PERMISSION OF HALKEY-ROBERTS CORPORATION IS PROHIBITED.

DRAWN BY	DMC	DATE	09/14/2015
APPROVED BY		DATE	
MATERIAL			
FINISH			
UNLESS OTHERWISE SPECIFIED: DIMENSIONS ARE IN INCHES TOLERANCES: ANGULAR: ± 1° TWO PLACE DECIMAL ± .01 THREE PLACE DECIMAL ± .005			
THIRD ANGLE PROJECTION			

<b>HR® Halkey-Roberts®</b>			
<b>TITLE</b> <b>DRAIN CLOSURE</b>			
SIZE	A	DRAWING NO.	C650ADMX
SCALE	1:1	DO NOT SCALE DRAWING	REV M
SHEET			1 OF 2

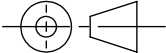
DRAWING NO. <b>C650ADMX</b>	REV <b>M</b>	<b>Customer Drawing</b>	REVISION HISTORY			
			REV	DESCRIPTION (ECO)	DATE	APPROVED
			L	ADD SUFFIX PFC CLEAR DEHP FREE MAT. ECO 10372	03/02/20	AK
			M	UPDATE MAT. DESCRIPTION ON SHEET 2. eco 10448	4/13/20	AK

BILL OF MATERIAL:

NO SUFFIX - RED PVC, ALPHA 3259 x 78 RED HRN ( 9024 )
DB - DARK BLUE PVC, ALPHA 3259 x 78 ROYAL BLUE, ( HR3)
PF - RED MEDICAL GRADE DEHP FREE ALPHAMED 2271BF80S, COLORANT RD323D
PFC - CLEAR MEDICAL GRADE DEHP FREE ALPHAMED 2271BF80S.

**MOLDED PARTS:**  
GATES, PARTING LINES, AND FLASH PER QUALITY CRITERIA

**PROPRIETARY AND CONFIDENTIAL**  
THE INFORMATION CONTAINED IN THIS DRAWING IS SOLE PROPERTY OF HALKEY-ROBERTS CORPORATION ST. PETERSBURG, FL. ANY REPRODUCTION IN PART OR AS A WHOLE WITHOUT THE WRITTEN PERMISSION OF HALKEY-ROBERTS CORPORATION IS PROHIBITED.

DRAWN BY	DMC	DATE	09/14/2015
APPROVED BY		DATE	
MATERIAL			
FINISH			
UNLESS OTHERWISE SPECIFIED: DIMENSIONS ARE IN INCHES TOLERANCES: ANGULAR: ± 1° TWO PLACE DECIMAL ± .01 THREE PLACE DECIMAL ± .005		THIRD ANGLE PROJECTION 	

HR® Halkey-Roberts®			
TITLE <b>DRAIN CLOSURE</b>			
SIZE <b>A</b>	DRAWING NO. <b>C650ADMX</b>	REV <b>M</b>	
SCALE <b>1:1</b>	DO NOT SCALE DRAWING		SHEET <b>2 OF 2</b>